

timfog

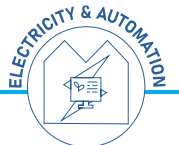
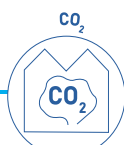


EUROCO₂-GH

Product Description

Product Description

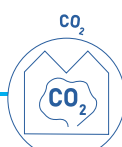
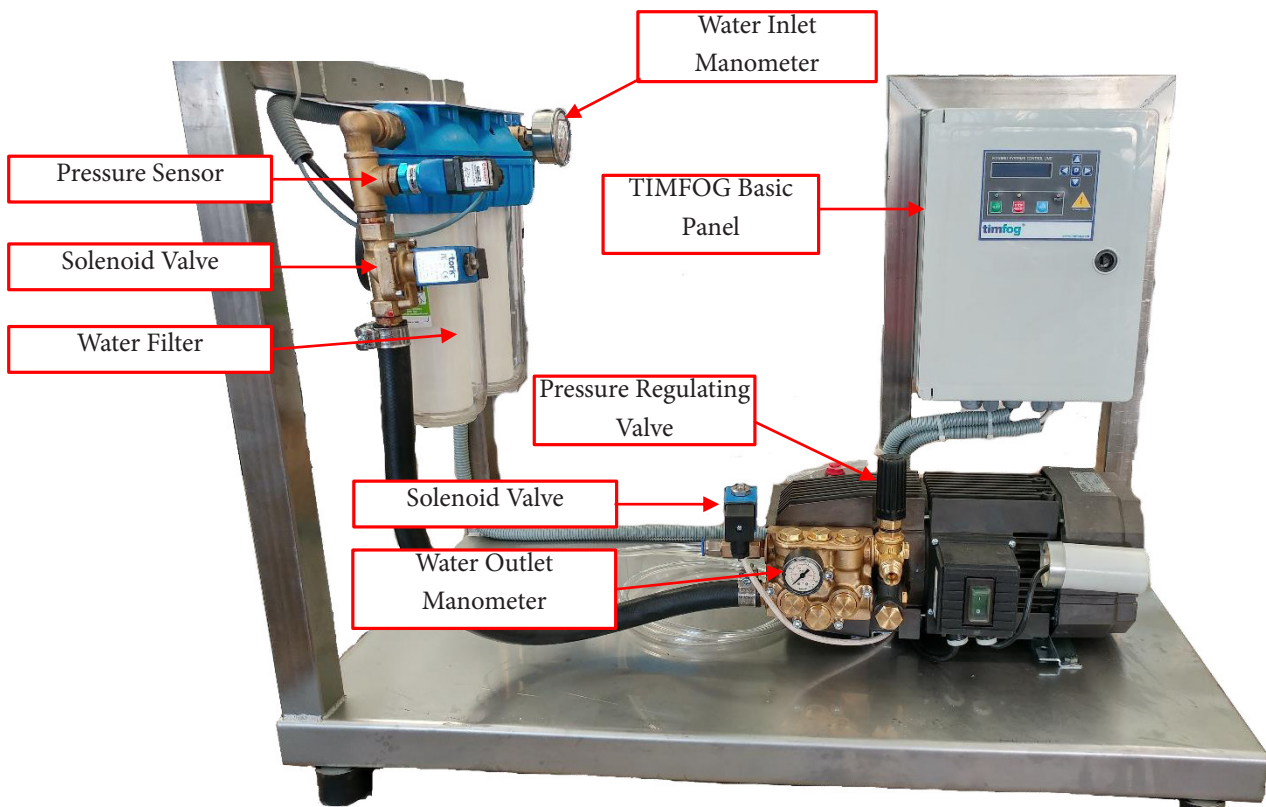
Published November 2016



1 Product Description

1.1 Timfog Basic

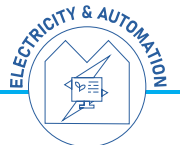
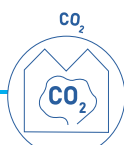
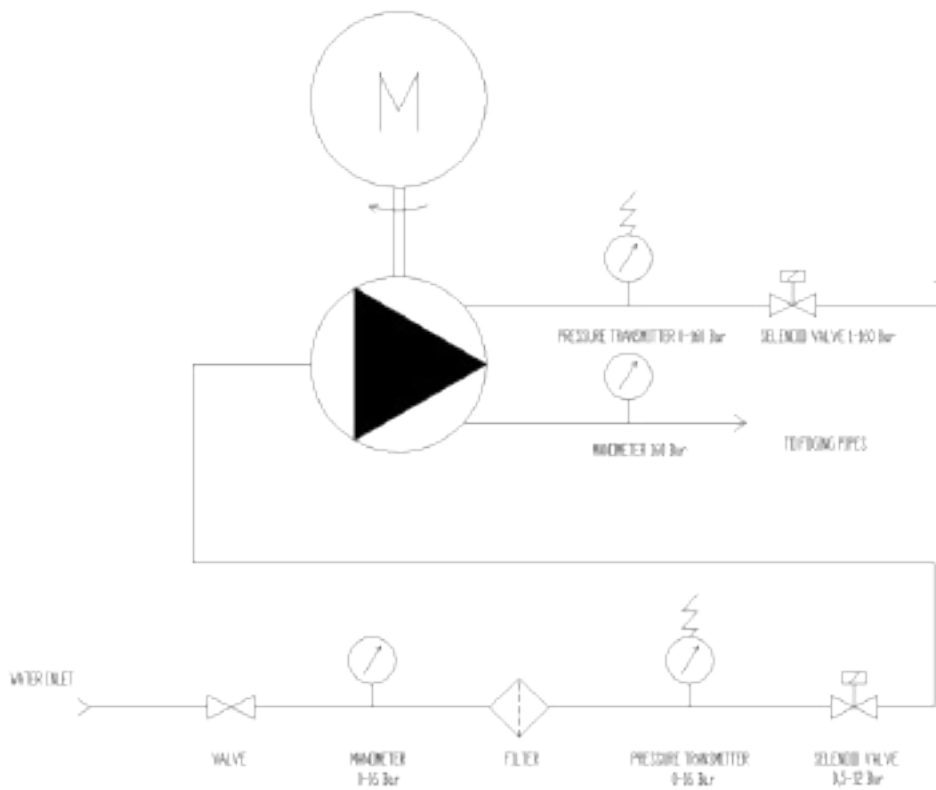
The panel type used in the Timfog Basic Model is a PIC-controlled, non-speed-controlled system.
It has a simple system as described below.



Product Description

1 Product Description

1.2 Timfog Basic Single-Line Diagram



Product Description

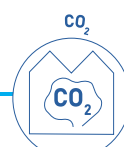
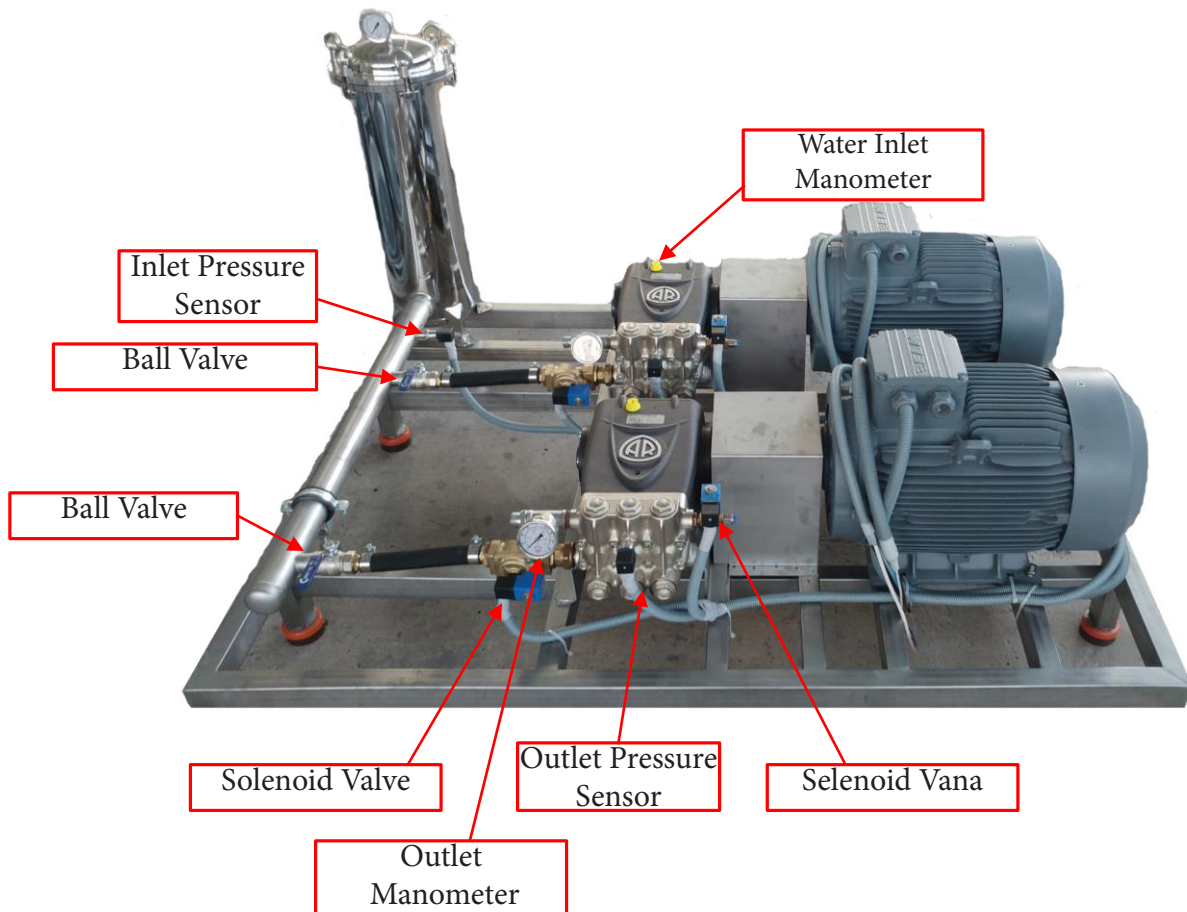
1.3 Timfog Pro

The panel types used in Timfog Pro Models are PIC-controlled, with inverters and touchscreen panels.

1.4 Timfog Pro+

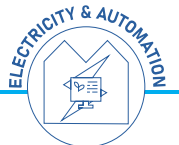
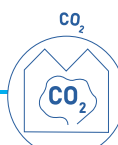
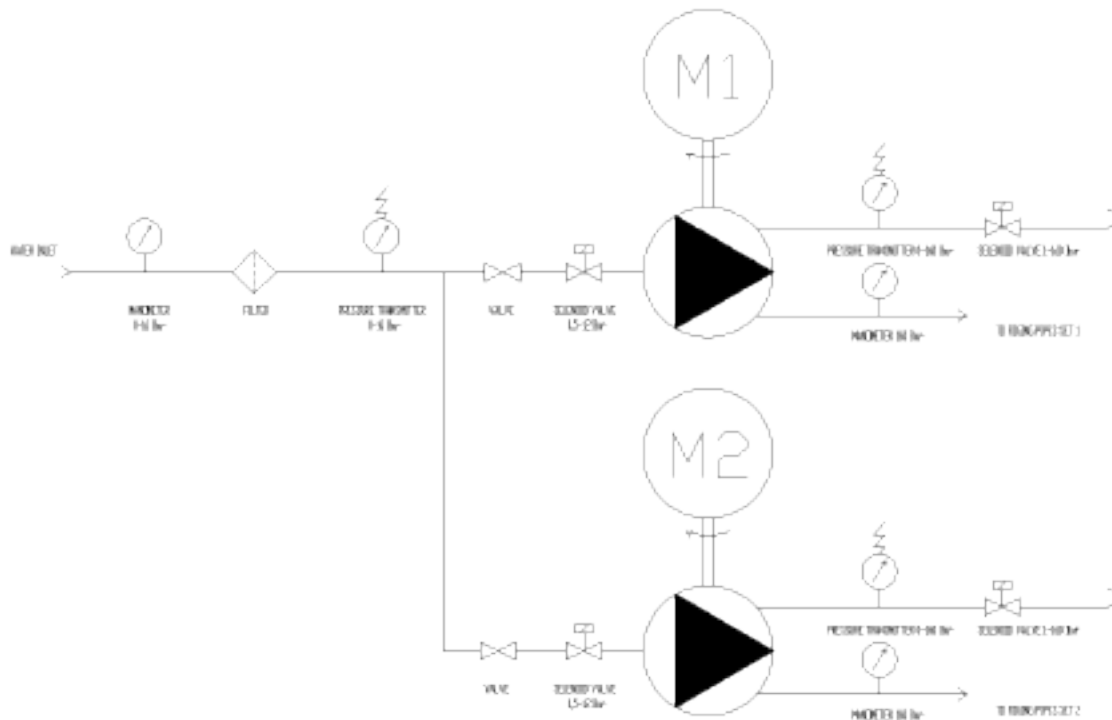
The panel types used in Timfog Pro+ Models are PLC-controlled, with inverters and touchscreen panels.

The unit used in Timfog Pro and Pro+ systems is as specified below.



1 Product Description

1.5 Timfog Pro and Pro+ Single-Line Diagram



CONTACT INFORMATION

HEAD OFFICE

Esenehir Mahallesi Kuru Sokak No: 28/3, 81230 Ümraniye, İstanbul, TÜRKİYE

+90 (216) 499 72 85 (Pbx)

+90 (216) 313 43 13 (Fax)

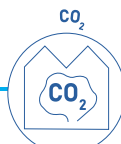
FACTORY

Zafer Mah. Yeni San. Sit. Yapı Koop. Şehit Yüzbaşı Kenter Cad. 1398 Ada 2-M Blok 7/8,
681230 Çorlu, Tekirdağ, TÜRKİYE

+90 (282) 692 58 58 (Pbx)

+90 (282) 673 59 01 (Fax)

timfog@timfog.com



**Çerkeşli Osb Mah. İmes 7.Cadde
No:3 Dilovası/Kocaeli**

+90 262 244 44 94