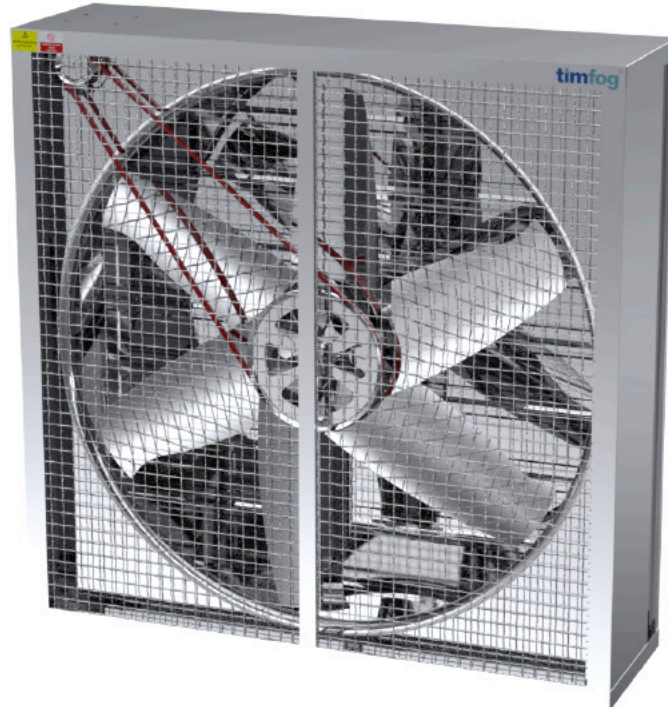


— **timfog** —



TEF-140

Greenhouse Exhaust Fan

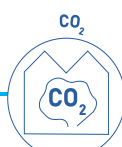
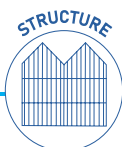


Greenhouse Exhaust Fan

TEF-140

TEF-140 exhaust fans are designed for working under harsh conditions such as high temperature, high humidity. Because of its special blade design, it provides high air flow with minimum electrical consumption and works with high efficiency.

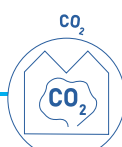
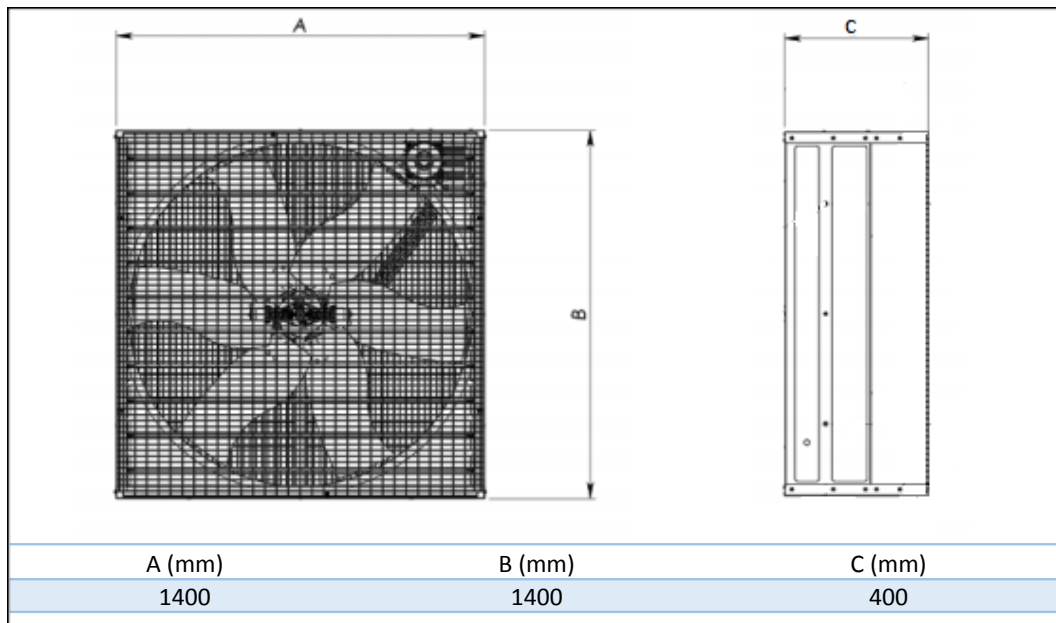
Special certified galvanized sheets are used in design of square fan protection and shutters. With 0,75 kW and 1,10 kW electric motors and belt – pulley power transfer mechanism, it assures long life time of electric motor. Due to shutter design, dust and dirt cannot hold on to its surfaces.



Technical Specifications

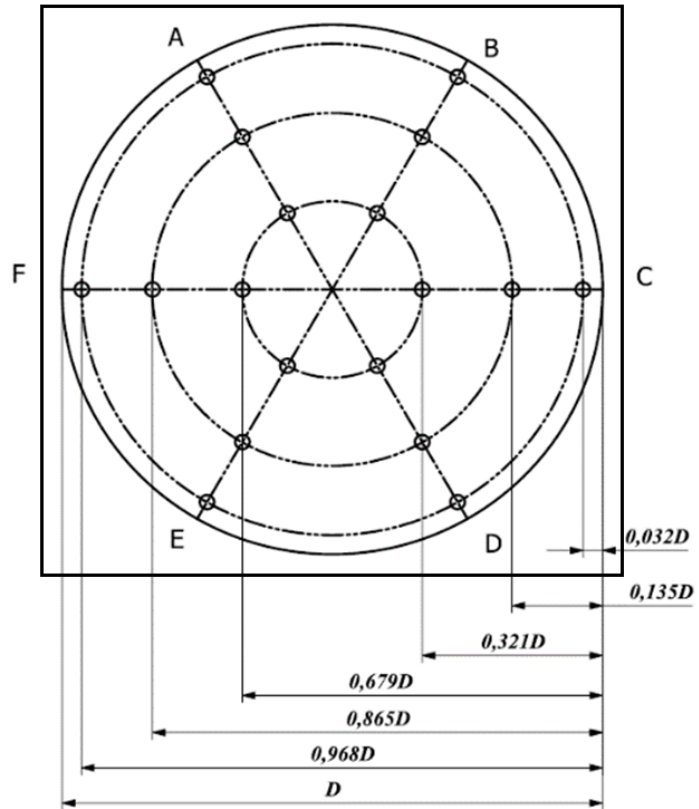
Weight	76 kg
Number of shutters	8
Air Flow (0 Pa) 1,1/0,75 kW	46220 / 4dd0270 (m ³ /h)
Air Flow (25 Pa) 1,1/0,75 kW	40600 / 35375 (m ³ /h)
Air Flow (50 Pa) 1,1/0,75 kW	35540 / 28515 (m ³ /h)
Working Temperature	-5 °C and 50 °C
Maximum Working Pressure	50 Pa
Vibration Level	≤1,5 cm/sec
Number of Blades	6 Pcs.
Fan Diameter	1220 mm
Fan Speed	1.425 rpm @ 50 Hz – 1.720 rpm @ 60 Hz
Electric Motor Protection Class	IP55
Electric Motor Isolation Class	F
Warranty	2 Year

Technical Drawings and Dimensions



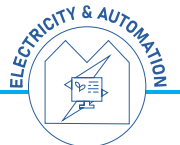
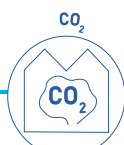
Performance Ratings

Pitot tube



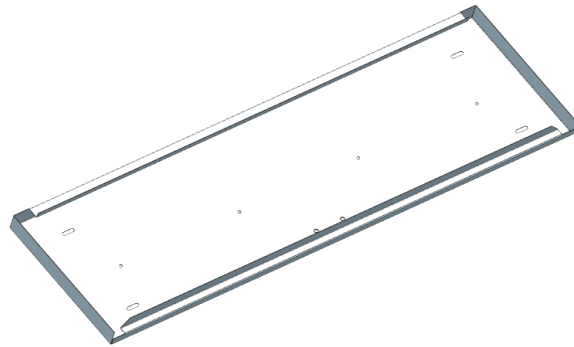
	A	B	C	D	E	F
P1	70.003	66.772	63.541	59.233	56.541	53.310
P2	46.220	52.771	49.540	48.463	48.866	44.145
P3	44.145	33.386	30.693	22.077	12.923	11.846

Measurements are in: m^3/h
Measurements are made according to AMCA standards.

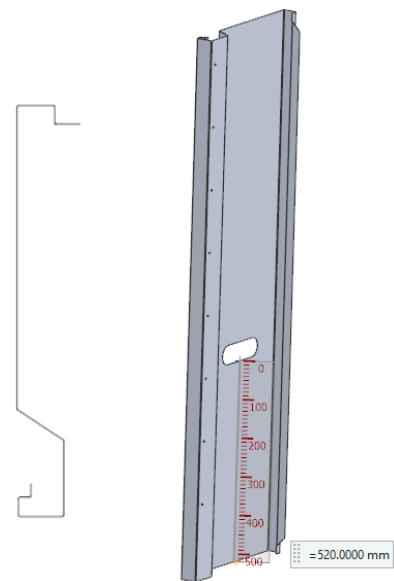


Part List

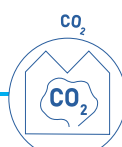
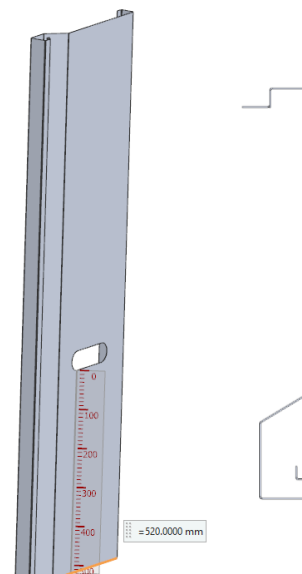
PRODUCT NO	STATEMENT	PCS.
1	BOTTOM PLATE	1
CODE	8.019.139.001	



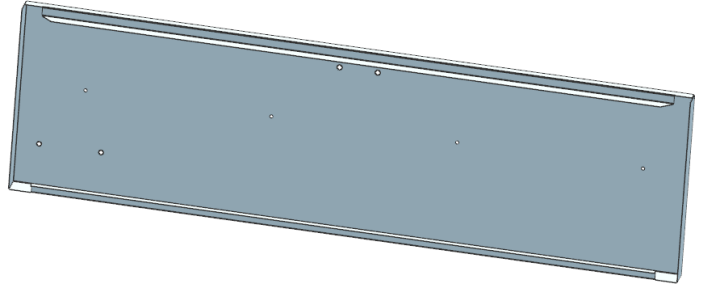
PRODUCT NO	STATEMENT	PCS.
2	SIDE PLATE-1 (LEFT)	1
CODE	8.019.139.002	



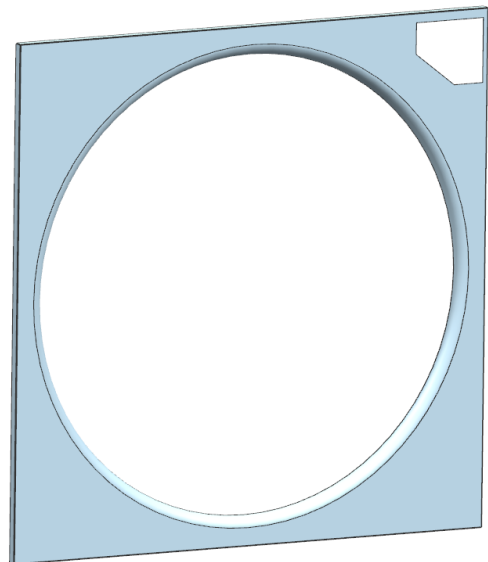
PRODUCT NO	STATEMENT	PCS.
3	SIDE PLATE-2 (RIGHT)	1
CODE	8.019.139.003	



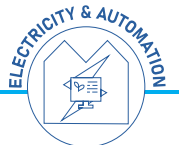
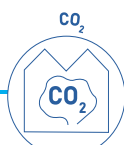
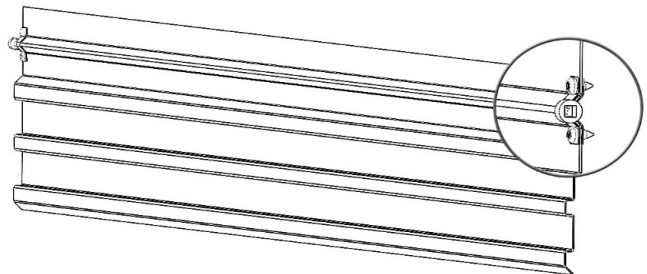
PRODUCT NO	STATEMENT	PCS.
4	TOP PLATE	1
CODE	8.019.139.004	



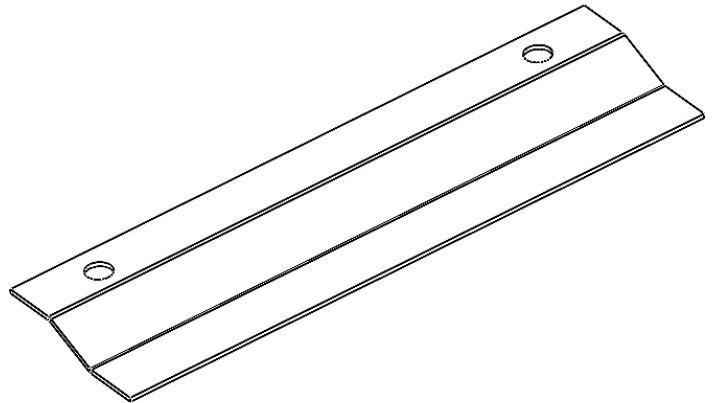
PRODUCT NO	STATEMENT	PCS.
5	AIR GUIDE PLATE	1
CODE	8.019.139.005	



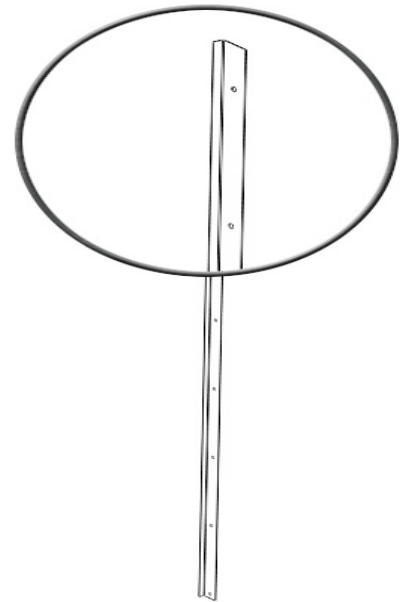
PRODUCT NO	STATEMENT	PCS.
6	SHUTTER BLADE WITH PLASTIC PARTS	8
CODE	8.019.139.006	



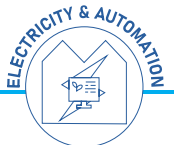
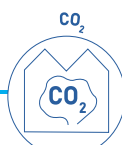
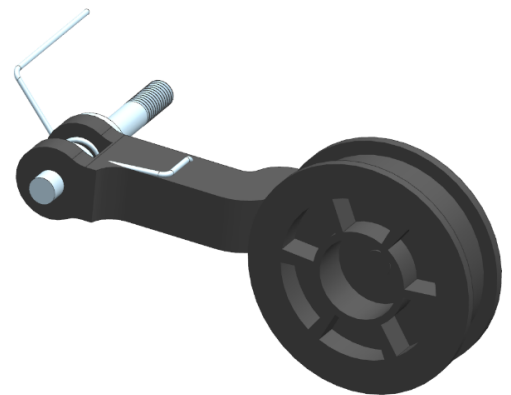
PRODUCT NO	STATEMENT	PCS.
7	MOTOR PLATE SUPPORT	1
CODE	8.019.139.007	



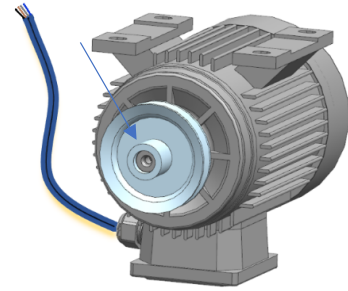
PRODUCT NO	STATEMENT	PCS.
8	SHUTTER SIDE SUPPORT PROFILE	2
CODE	8.019.139.008	



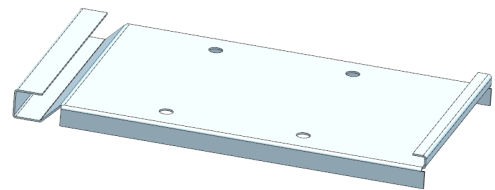
PRODUCT NO	STATEMENT	PCS.
9	TENSION PULLEY	1
CODE	8.020.144.001	



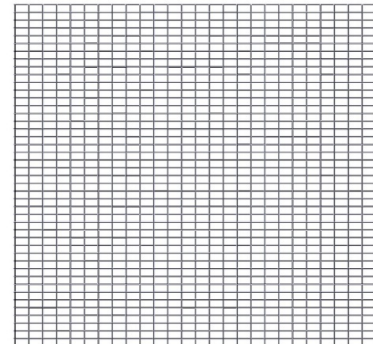
PRODUCT NO	STATEMENT	PCS.
10	MOTOR, MOTOR PULLEY, M8X10 HEX SOCKET SET SCREW AND MOTOR CABLE.	1
CODE	8.013.088.002	



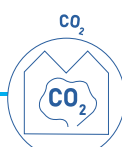
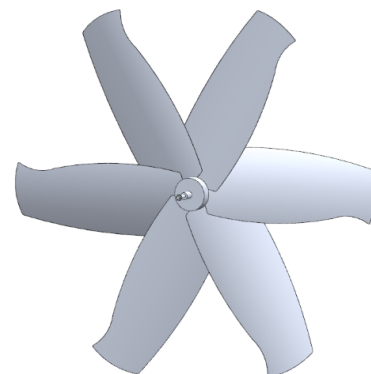
PRODUCT NO	STATEMENT	PCS.
11	MOTOR PLATE	1
CODE	8.019.139.012	



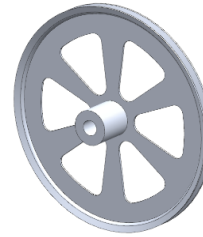
PRODUCT NO	STATEMENT	PCS.
12	WIRE MESH	1
CODE	8.019.139.009	



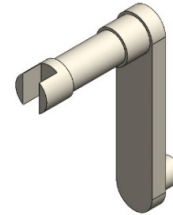
PRODUCT NO	STATEMENT	PCS.
13	PROPELLER	1
CODE	8.010.068.001	



PRODUCT NO	STATEMENT	PCS.
14	PROPELLER PULLEY	1
CODE	8.010.068.002	



PRODUCT NO	STATEMENT	PCS.
15	PLASTIC BRACKET	16
CODE	8.020.144.002	



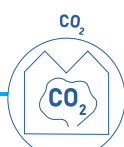
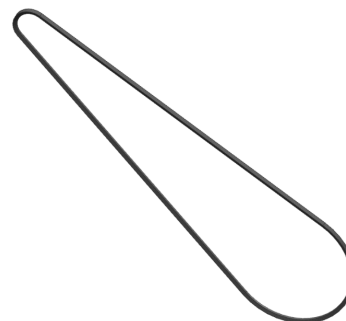
PRODUCT NO	STATEMENT	PCS.
16	M1,6x16mm SPLIT COTTER PIN	16
CODE	8.020.144.003	



PRODUCT NO	STATEMENT	PCS.
17	M8 SERRATED LOCK WASHER	1
CODE	8.026.189.001	



PRODUCT NO	STATEMENT	PCS.
18	A/13 x 2125 Li 13mm FLAT "V" TYPE MOTOR BELT	1
CODE	8.024.167.001	



PRODUCT NO	STATEMENT	PCS.
19	M8x30 FLANGED GALVANIZED BOLT	4
CODE	8.026.187.004	



PRODUCT NO	STATEMENT	PCS.
20.A	M6x16 FLANGED GALVANIZED BOLT	24
CODE	8.026.187.001	

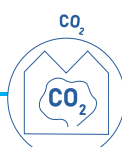
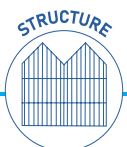


*ONLY IF PROPELLER IS NOT ASSEMBLED. ASSEMBLED PROPELLER DOES NOT REQUIRE ADDITIONAL BOLTS.

PRODUCT NO	STATEMENT	PCS.
20.B	M6x16 FLANGED GALVANIZED BOLT	12
CODE	8.026.187.001	



PRODUCT NO	STATEMENT	PCS.
21	M8x16 FLANGED GALVANIZED BOLT	2
KOD	8.026.187.002	



PRODUCT NO	STATEMENT	PCS.
22	M8x20 GALVANIZED BOLT	1
CODE	0.025.176.053	



PRODUCT NO	STATEMENT	PCS.
23	M6 NUTS WITH NYLON INSERT	24
CODE	0.025.176.062	



*ONLY IF PROPELLER IS NOT ASSEMBLED. ASSEMBLED PROPELLER DOES NOT REQUIRE ADDITIONAL NUTS.

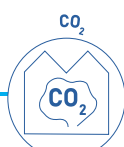
PRODUCT NO	STATEMENT	PCS.
24	M10X25 HEX SOCKET COUNTERSUNK BOLT	4
CODE	8.026.187.003	



PRODUCT NO	STATEMENT	PCS.
25	M10 FLANGED NUT	4
CODE	8.026.188.001	



PRODUCT NO	STATEMENT	PCS.	CODE
26	M8 FLANGED NUT	7	8.026.188.002



PRODUCT NO	STATEMENT	PCS.
27	3,9X13 SELF TAPPING SCREW	10
CODE	8.026.185.001	



PRODUCT NO	STATEMENT	PCS.
28	M10 FLANGED RIVET NUT	8
CODE	8.026.188.001	



* FLANGED RIVET NUTS ARE INSTALLED ON FAN FRAME. ONLY REQUIRED IF THEY ARE NOT MOUNTED.

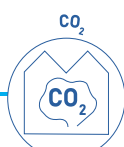
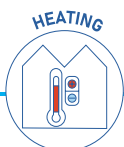
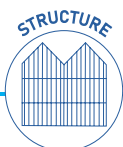
PRODUCT NO	STATEMENT	PCS.
29	RUBBER CABLE GROMMET	1
CODE	8.020.144.004	



PRODUCT NO	STATEMENT	PCS.
30	4,8X19 SELF TAPPING SCREW	25
CODE	8.026.185.002	



PRODUCT NO	STATEMENT	PCS.	CODE
31	4X12 AL/STEEL POP RIVET	32	8.026.194.001



* ALUMINIUM POP RIVETS ARE INSTALLED ON SHUTTER BLADE. REQUIRED ONLY IF SHUTTER IS DISASSEMBLED

PRODUCT NO	STATEMENT	PCS.
32	4,8X10 STEEL POP RIVET	42
CODE	8.026.194.002	



PRODUCT NO	STATEMENT	PCS.
33	M16 FLAT WASHER (3mm)	2
CODE	0.026.189.024	



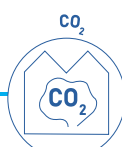
PRODUCT NO	STATEMENT	PCS.
34	M6 FLANGED NUT	6
CODE	0.026.188.119	



PRODUCT NO	STATEMENT	PCS.
35	M8 FLAT WASHER (3mm)	1
CODE	0.025.176.051	



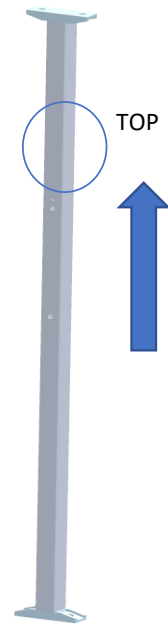
PRODUCT NO	STATEMENT	PCS.
36	M12 THIN NUT	1
CODE	8.026.188.003	



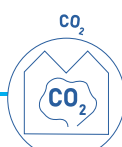
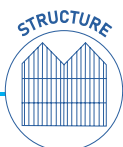
PRODUCT NO	STATEMENT	PCS.
37	M16 THIN NUT	1
CODE	8.026.188.004	



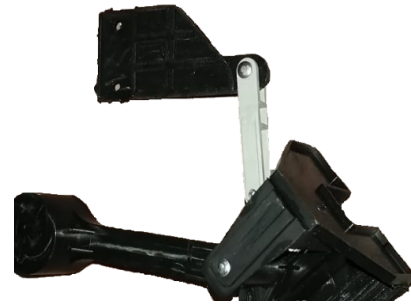
PRODUCT NO	STATEMENT	PCS.
38	MIDDLE PROFILE	1
CODE	8.019.139.010	



PRODUCT NO	STATEMENT	PCS.
39	SHUTTER BALLAST (LEFT)	1
CODE	8.020.144.005	



PRODUCT NO	STATEMENT	PCS.
40	SHUTTER BALLAST (RIGHT)	1
CODE	8.020.144.012	



PRODUCT NO	STATEMENT	PCS.
41	PLASTIC HANDLE	2
CODE	8.020.144.006	



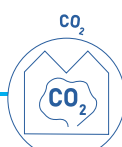
PRODUCT NO	STATEMENT	PCS.
42	TIMFOG LABEL (4 cm)	1
CODE	8.020.144.007	



PRODUCT NO	STATEMENT	PCS.
43	WARNING LABEL-1	2
CODE	8.020.144.008	



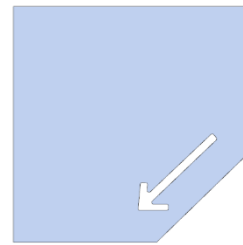
PRODUCT NO	STATEMENT	PCS.
44	WARNING LABEL-2	1
CODE	8.020.144.009	



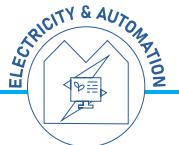
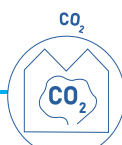
PRODUCT NO	STATEMENT	PCS.
45	ELECTRIC ATTENTION LABEL	1
CODE	8.020.144.011	



PRODUCT NO	STATEMENT	PCS.
46	FAN DIRECTION PLATE	1
CODE	8.019.139.011	



PRODUCT NO	STATEMENT	PCS.
47	SIDE PANEL	2
CODE	8.019.139.013	



PRODUCT NO	STATEMENT	PCS.
48	4 WAY PLASTIC ELECTRICAL TERMINAL CONNECTOR	1
CODE	8.013.085.001	

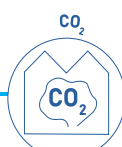
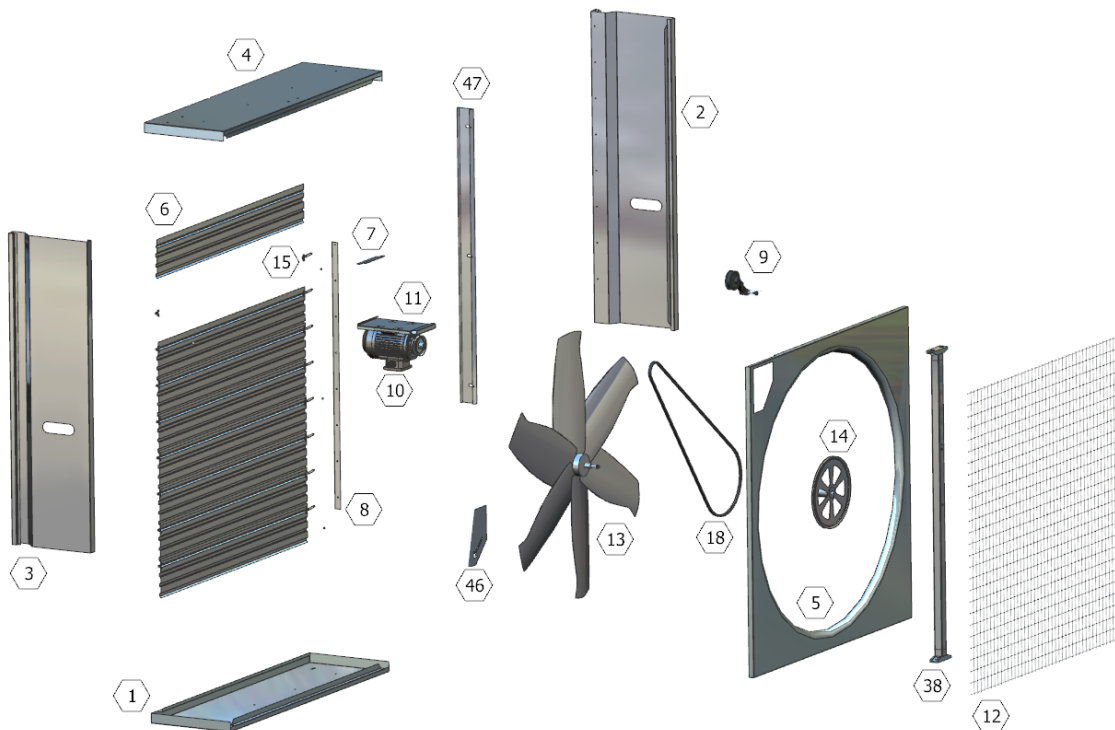


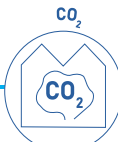
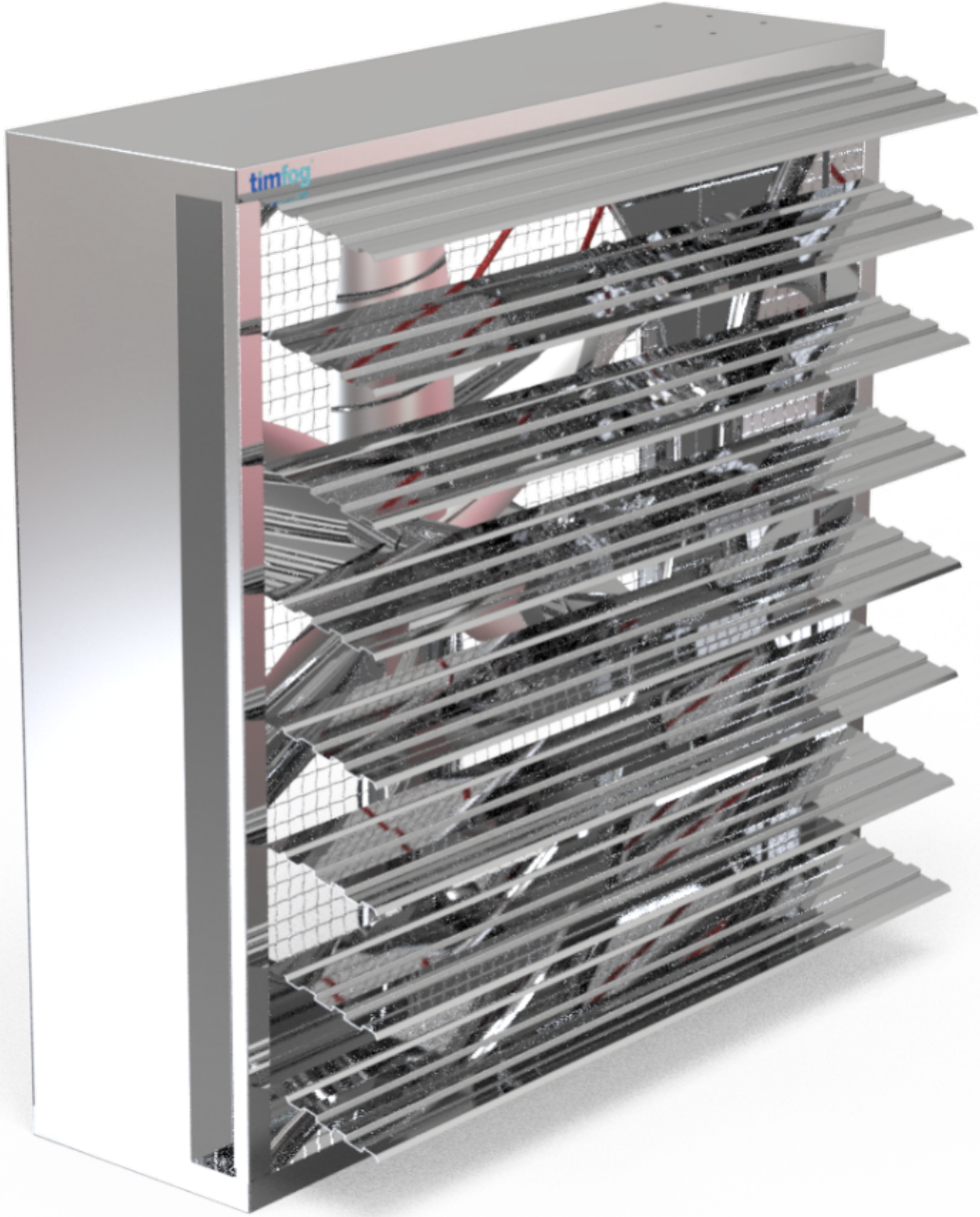
PRODUCT NO	STATEMENT	PCS.
49	PRODUCT LABEL	1
CODE	8.020.144.010	



NOTE: PARTS WITH 20A – 23 - 28 – 31 PRODUCT NUMBERS ARE ONLY REQUIRED IF CONNECTED PARTS ARE NOT ASSEMBLED.

Exploded Technical Drawing





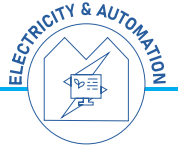
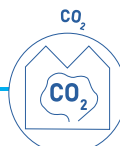
timfog

Email timfog@timfog.com

Phone +90 216 466 20 06

Şerifali Mah. Türker Cad. No: 51
Ümraniye 34775 İstanbul / TURKEY

Timfog is a brand of MCM Engineering.



**Çerkeşli Osb Mah. İmes 7.Cadde
No:3 Dilovası/Kocaeli**

+90 262 244 44 94